

MARS GAMING

MM2



MARS Gaming software installation and manual

Please connect your MARS GAMING MM2 mouse to the PC before the software installation.

1. Please click the setup.exe to start the software installation.
2. Click Next and follow the steps.
3. Click Finish

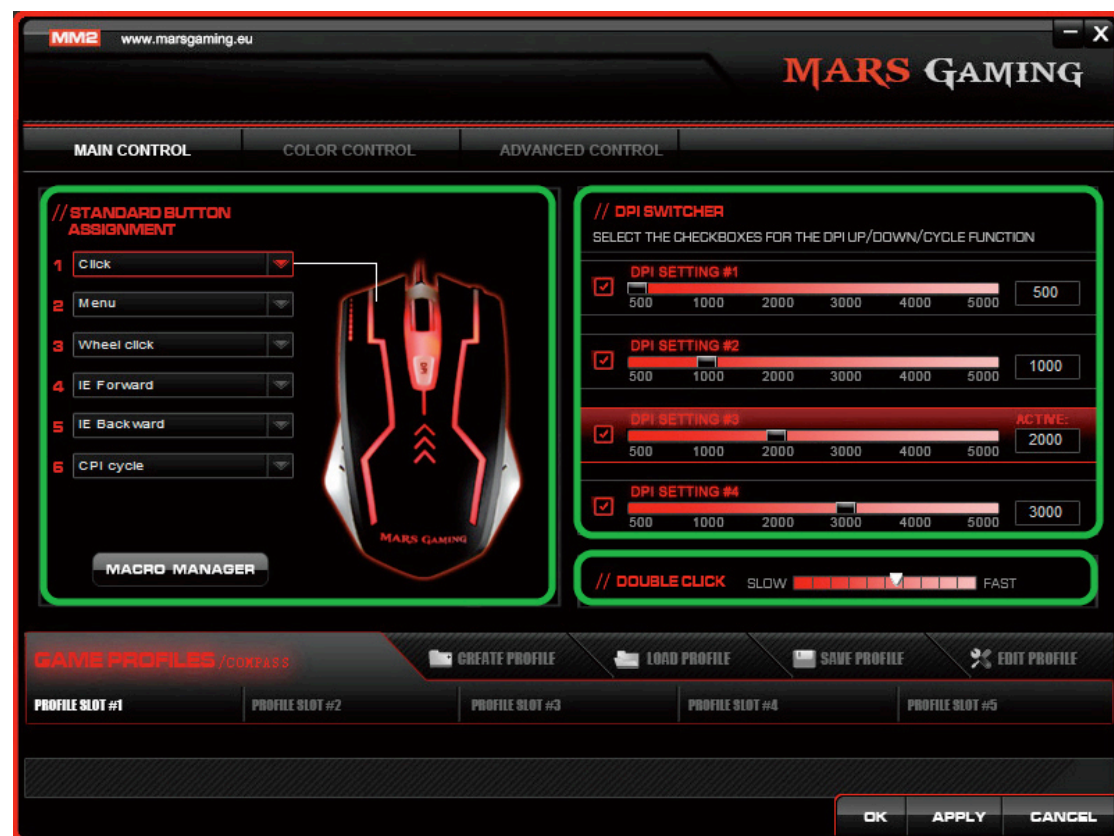
There are three main sections in this mouse control software which are MAIN CONTROL / COLOR CONTROL / ADVANCED CONTROL. In the lower part of the software interface, you can create your own profile preferences and save into one of the five profile slots.

OK: Save setting and close dialog box.

Cancel: Exit the dialog box without saving.

Apply: Make changes to take effect but not close the dialog box.

MAIN CONTROL



BUTTON ASSIGNMENT

User can assign each of the six keys in this mouse with a specific function by selecting from a pull down menu. The functions are:



Assign Macro: select and assign a recorded Macro to a key

Multimedia: select and assign a media function to a key

CPI switch/ CPI up: Executing dpi up function

CPI switch/ CPI down: Executing dpi down function

Office functions: select and assign an office function to a key

Windows: select and assign a Windows action to a key

Click: Executing mouse click function

Menu: Executing click function of standard right button.

Wheel Click: Executing general rolling function of mouse.

Double-click: Executing mouse double-click action to a single key

Assign a shortcut: assign a shortcut to a key

IE Forward: Executing the function of IE Forward.

IE Backward: Executing the function of IE Backward.

Button off: Disable a key.

DPI SWITCHER

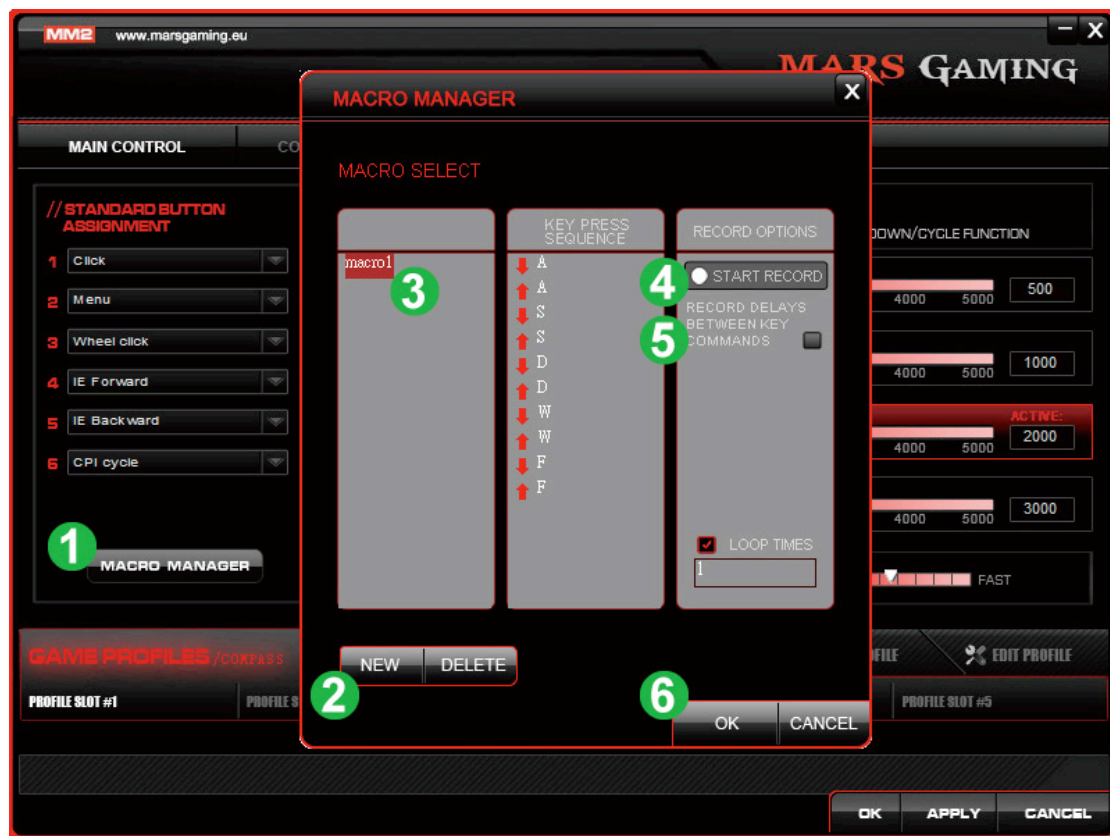
User can define four sets of DPI resolution by moving the bar from left to right. The higher the DPI, the faster the cursor will move.

By checking the box on the left of the bar, you can cycle through the 4 sets of DPI by clicking the DPI button on the mouse.

DOUBLE CLICK

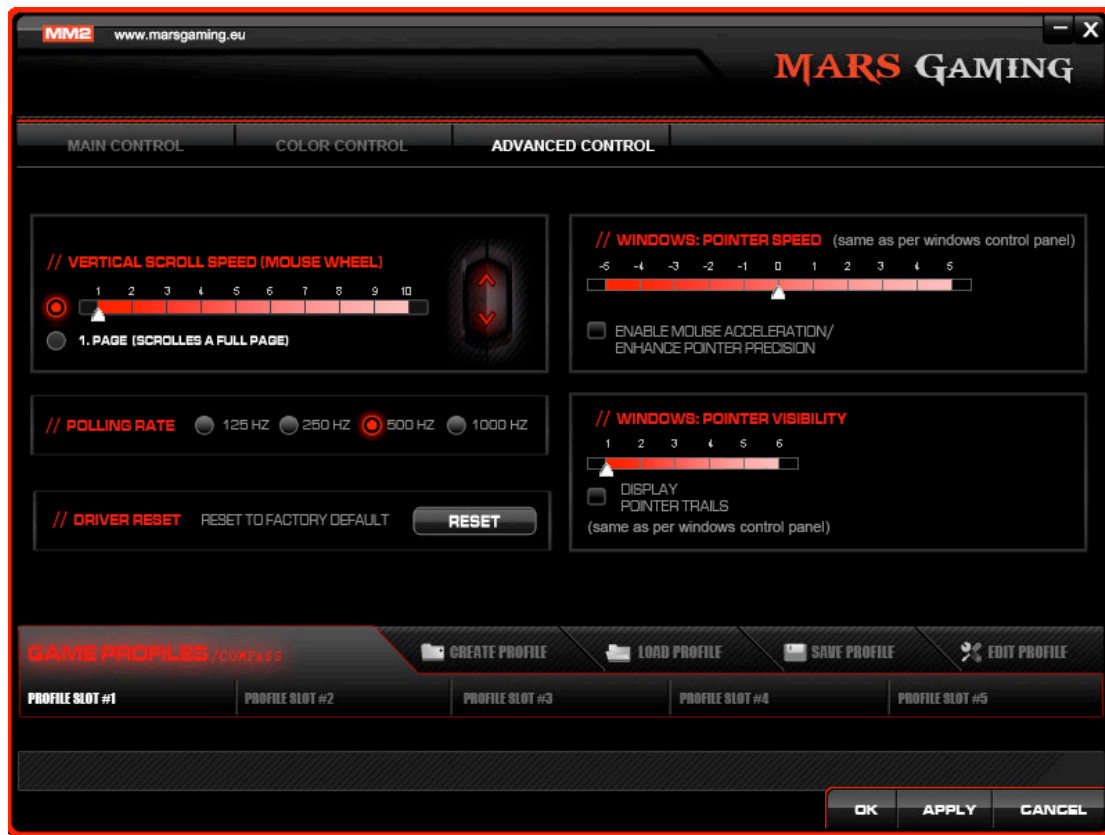
User can define the speed needed between the two clicks to perform a double-click action.

MACRO MANAGER



1. Click MACRO MANAGER
2. Click NEW
3. Type in a new Macro name and press Enter
4. Click START RECORD and type in a combination of keys of your preference.
5. Click STOP RECORD to stop recording. You can also set the number of Loop Times.
6. Click OK

ADVANCED CONTROL



Advanced setting includes Vertical scroll speed, Polling rate, Pointer speed, Pointer visibility and Driver reset.

Vertical scroll speed: Adjust the wheel rolling speed

Polling rate: Setting the report rate of a mouse

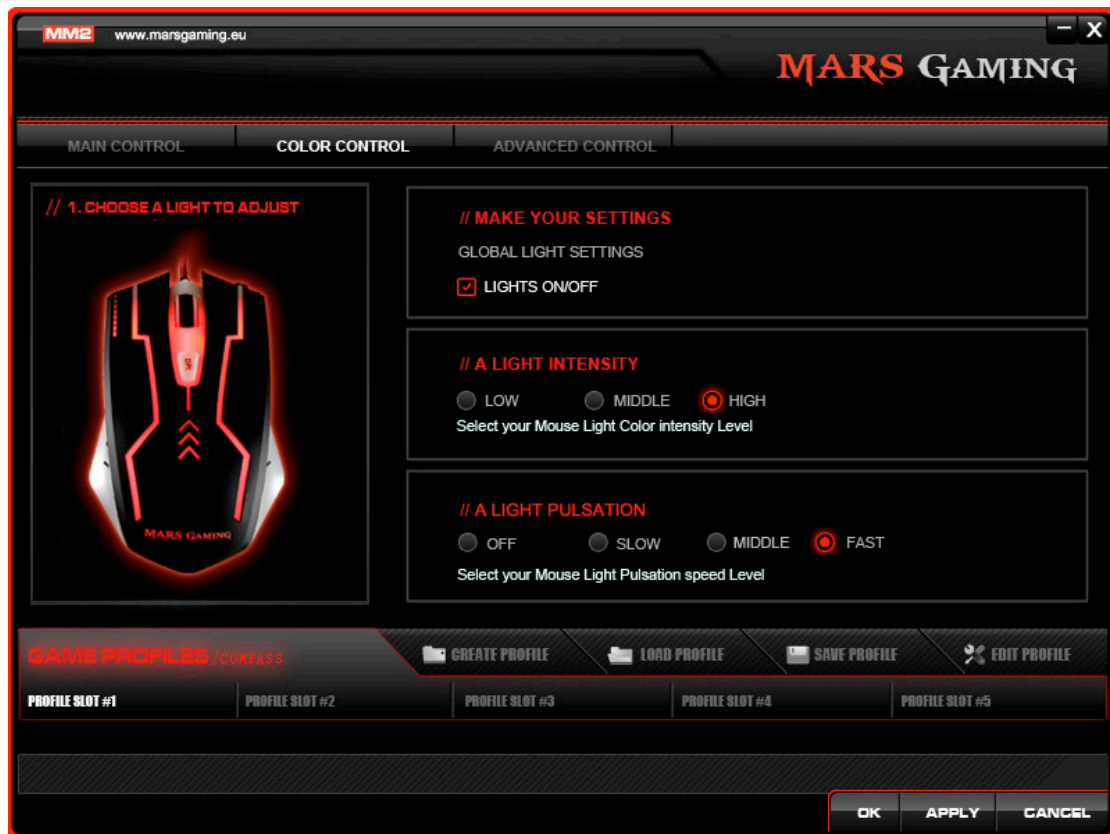
Pointer speed: Adjust the pointer speed

Pointer visibility: Adjust the visibility of the pointer

Driver reset: Reset to factory setting

Remember to click APPLY or OK in order for the setting to take effect.

COLOR CONTROL



Global light settings: Executing LED on/off

A light intensity: Set the intensity of the LED light

A light pulsation: Set the light pulsation speed

Remember to click APPLY or OK in order for the setting to take effect.